



MFAT 20 PH magnet zero threshold

- For all plastic and aluminum doors in new construction (house entrance, balcony, patio)
- Highly insulating composite profile, even for energy efficient houses
- Threshold-free acc. to DIN 18040, follows all the principles of universal design

MFAT 20 PH

Version: March 2018
Subject to technical changes

Compatible with turn or tilt/turn doors, one- and two-leaf, overlap/fixed glazing.

Driving rain seal up to E750 without canopy, without channel (even with overlap-doors). Air penetration Class 4.

Evaluated gap noise insulation index $R_{s,w}$ up to 46 dB

Waterproofing preassembled at the factory acc. to DIN 18531/18533 and flat roof guideline possible.

No wear, no mechanics, ready-to-install delivery.

20 year warranty on magnet tensile force.

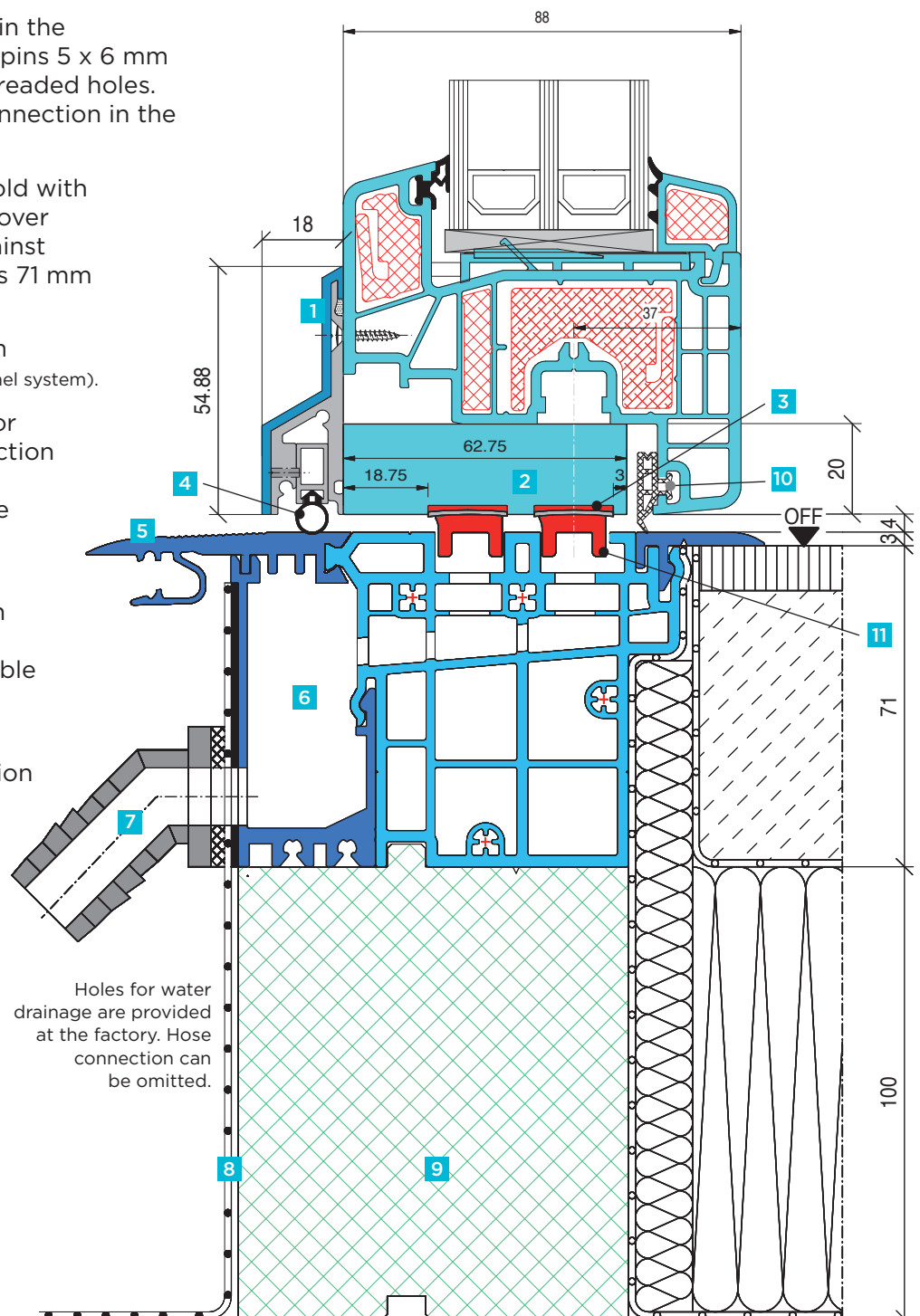
For nursing homes, senior residences, hospitals, homes for people with disabilities, day care facilities, kindergartens, single family homes, apartment buildings, hotels.

- 1** Aluminum weatherboard with profile cover surface in choice of EV1 silver, anthracite RAL 7016, bronze C33, white RAL 9016 or plain.
- 2** Plastic holder profile, white, adapted at the factory to width and sash fold dimension.
Prerequisite: binding cutaway drawing of the sash used in .dwg or .dxf format.
Interior magnet guide is parallel to the hardware groove.
- 3** Upper magnet seal profiles with insulation and double adhesive tape (3 x 17 mm).
An additional fixture is recommended for fastening the upper magnets permanently.
- 4** Adjustable silicone slide seal in the weatherboard with threaded pins 5 x 6 mm for invisible fastening with threaded holes.
Seal base with permanent connection in the aluminum holder profile.
- 5** Highly insulating zero threshold with integrated drainage. A PVC cover is included for protection against construction dirt. Floor recess 71 mm (alternative 50 mm).
- 6** Water flow profile with 17 mm drainage holes (can replace channel system).
- 7** Water drainage connectors for construction site hose connection incl. self-tapping sheet metal screws 4.2 x 19 mm for on site assembly.
- 8** For an additional charge:
Sealing membrane welded on at the factory (Wolfen).
Connection bitumen compatible or material identical to the seal material.
- 9** Load-bearing thermal insulation for threshold foundation (material: PET).
Standard height: 100 mm (Auxiliary profiles for higher floor structure available for additional charge)
- 10** Additional TPE seal, so that the circumferential sealing level is restored to the same as the doorstop (system dependent).
- 11** Two lower magnet seal profiles (9 x 15 mm), **nose always points to the outside.**

Scope of delivery and calculation in fixed lengths (no cuts).
Dimensional specifications = decorative frame outer dimensions including fixed glazing side parts (up to max. 6000 mm length).

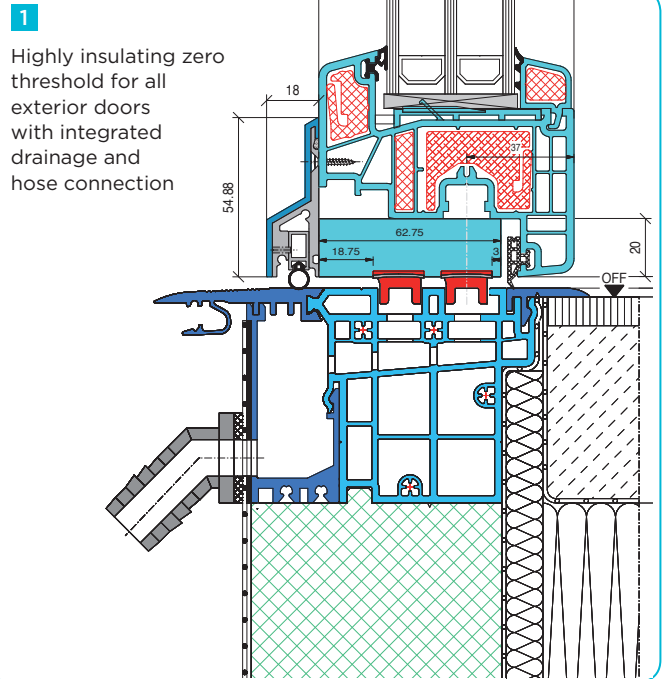
Available for additional charge: Patio seal on the magnet double seal, preassembled at the factory taking into account the technical regulations with provided sealing (150 mm) on the masonry, consisting of: Composite sheet metal profiles and welded-on sealing membrane flag WOLFEN, d = 1.5 mm, membrane width approx. 550 mm, and two loose included outside corners.

Other plastic sealing membranes, e.g. PVC-pnb, EVA-PVC, FPO/TPO, chlorinated polyethylene, EPDM based are possible on site.

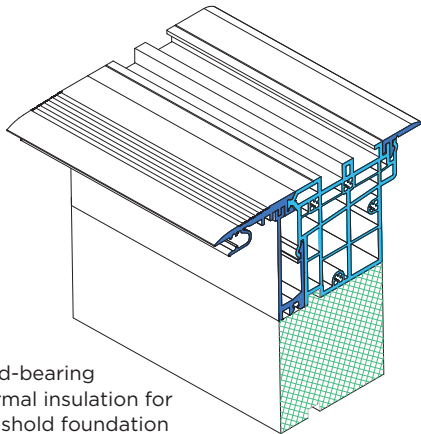


Well thought-out details as an overall concept

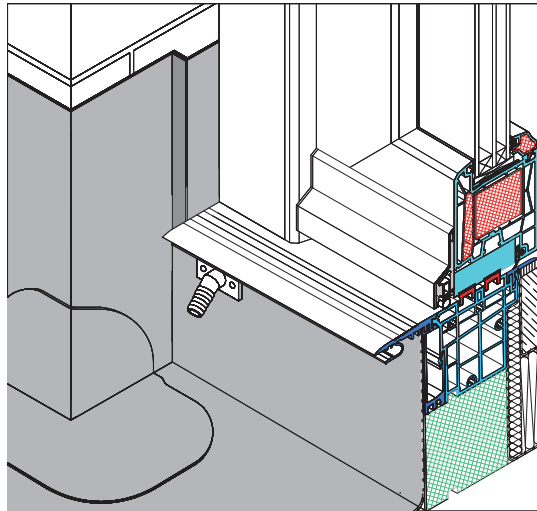
- 1** Highly insulating zero threshold for all exterior doors with integrated drainage and hose connection; floor recess 71 mm (alternative: 50 mm).
- 2** Load-bearing thermal insulation for threshold foundation (material: PET).
- 3** Connection of the seal on jamb and zero threshold as per DIN 18531/18533 and Flat Roof guidelines.
- 4** Aluminum channel frame 120 mm wide with galvanized grating or stainless steel perforated plate 93 mm.
Alternative: Aluminum channel frame 170 mm wide with galvanized or stainless steel grating 145 mm.
- 5** Aluminum bridging profile to cover the thermal insulation composite system.
- 6** Anthracite doormat 600 x 400 mm with clip-in aluminum frame and adjustable feet.
(Custom lengths every 600 mm possible)



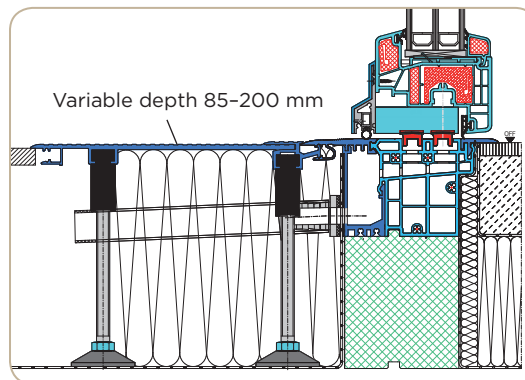
2



- 3** Connection of the seal on jamb and zero threshold as per DIN 18531/18533 and Flat Roof guidelines.

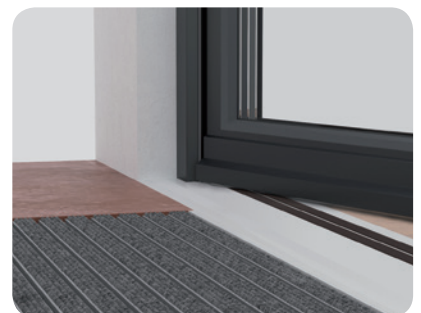


- 4** **Aluminum channel frame** 120 or 170 mm wide **with grates** and possibility to directly clip-on to the ALUMAT zero threshold or on the aluminum bridging profile.



- 5** **Aluminum bridging profile** to cover the thermal insulation composite system

- 6** **Anthracite doormat** With clip-on aluminum frame 600 x 400 mm and adjustable feet (custom lengths every 600 mm possible).

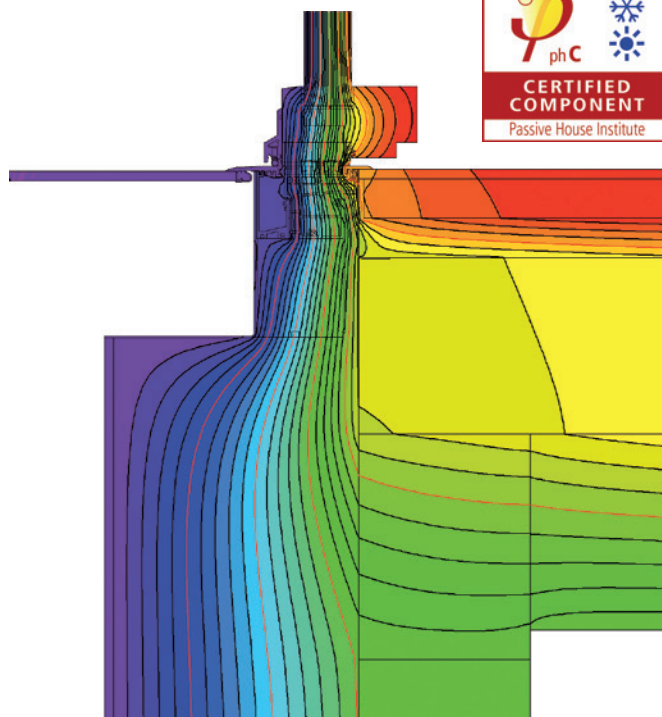


ift-Nachweis		ift ROSENHEIM
Classification Report		
Number	17-003899-PR01 (NW-A01-02-en-01)	
Owner	ALUMAT Frey GmbH Im Hart 10 87600 Kaufbeuren Germany	
Product	Tilt- / Tilt-turn window with threshold profile	
Designation	Shipping name: Streamline AD* with threshold profile Alumat MFAT 20 PH	
Details	Manufacturer: ALUMAT Frey GmbH, - Kaufbeuren; Material: Polyvinyl Chloride unplasticized (PVC-U); Opening direction: Inwards; Overall dimensions (W x H): 2086 mm x 2343 mm	
Special features	*According to the information provided by the manufacturer, the used profiles are taken from company Salamander, Industrie-Produkte GmbH, System Streamline AD	
Result	<p>Air permeability according to EN 12207:2016-12 Class: 4</p> <p>Resistance to wind load according to EN 12210:2016-03 Class: C2/B2</p> <p>Watertightness according to EN 12208:1999-11 Class: E750</p> <p>ift Rosenheim 06.02.2018</p> <p><i>Thomas Stefan</i> Thomas Stefan, Dipl.-Ing. (FH) Head of Testing Department Building Component Testing</p> <p><i>Stephan Bargmann</i> Stephan Bargmann, Dipl.-Ing. (FH) Operating Testing Officer Building Component Testing</p> <p>Identity-Check www.ift-rosenheim.de/ift-approv/10_25C-06A08</p>	
<p>EN 14351-1:2006+A2:2016-09 Test report: 17-003899-PR01 PB-A01-02-en-01 Representation</p> <p>Instructions for use The Evidence ("Nachweis") can be used for preparing the Declaration of Performance in accordance with the Construction Products Regulation 305/2011/EU. The results obtained apply to the direct field of application determined in Annex E of EN 14351-1.</p> <p>Validity There is no time limit. When using this document the up-to-dateness of above basis and the conformity of the product have to be observed.</p> <p>Notes on publication The ift-Guidance Sheet "Conditions and Guidelines for the Use of ift Test Documents" applies.</p> <p>Rothenburg GmbH Theater Gasse 48, 7-8 D-93020 Rothenburg</p> <p>Contact Phone: +49 (0) 9301 2611-0 Fax: +49 (0) 9301 231-100 www.ift-rosenheim.de</p> <p>Testing and Certification - EN ISO/IEC 17025 Inspection - EN ISO/IEC 17020 Product Certification - EN ISO/IEC 17050 Certification of Management Systems - EN ISO/IEC 17021</p> <p>Rothenburg GmbH Theater Gasse 48, 7-8 D-93020 Rothenburg</p> <p>DAKMS Rothenburg GmbH Theater Gasse 48, 7-8 D-93020 Rothenburg</p>		

The following criteria were tested for the cool moderate climate zone:

Comfort $U_{W, installed} \leq 0.85 \text{ W/(m}^2 \text{ K)}$
with $U_g = 0.70 \text{ W/(m}^2 \text{ K)}$

Hygiene $f_{Rsl=0.25} \geq 0.70$



Tested with Salamander 76 AD

WHAT DOES BARRIER-FREE ACC. TO DIN 18040 ACTUALLY MEAN?

The DIN (Deutsches Institut für Normung e.V.) states: "Only an exterior door design that is threshold-free and at the same level, i.e. with a **threshold height of 0 cm**, is barrier-free. The height of 2 cm formulated in the second sentence only represents an exceptional case in justified individual case."

Our request for quote information, installation guidelines and test certificates can be found on our website:



www.alumat.de

