



HST 20 lift-and-slide door flat threshold

- Suitable for new construction and renovations
- For plastic lift-and-slide doors ('winter gardens', patios, balconies)
- With PVC center section as optimum thermal isolation
- **NEW:** With load-bearing thermal insulation for threshold foundation

HST 20

New construction and renovation profile for lift-and-slide door systems (prefixed drainage channels are recommended)

Stock lengths 2500 to 6000 mm

Prefabricated delivery

Maximum user friendliness without wear or mechanics

Designed according to principles of universal design

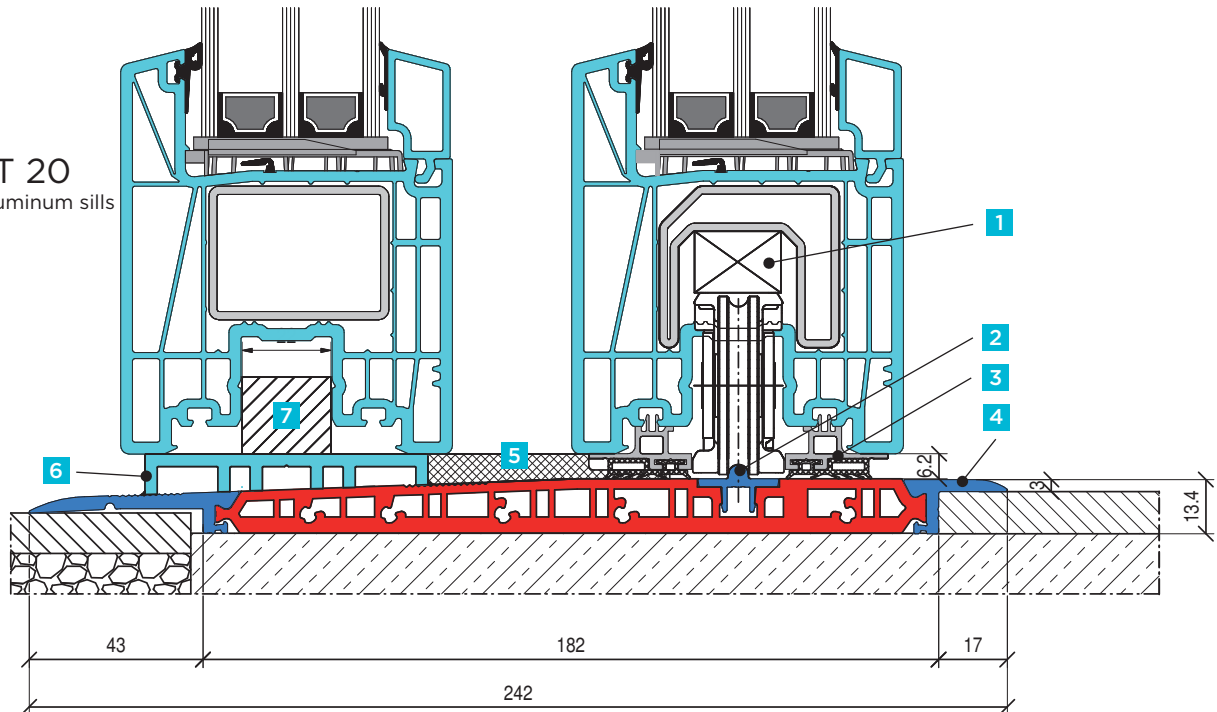
Version March 2018 · subject to technical changes

Lift-and-slide door flat threshold **without** floor recess, thermally insulated. Alu EV 1 anodized with PVC center section.

Calculation according to stock lengths: 2500 / 3000 / 3500 / 4000 / 4500 / 5000 / 5500 / 6000 mm
(Cut to length to fixed dimension with decorative frames, pre-drilled and ready for assembly on threshold)

TYPE HST 20

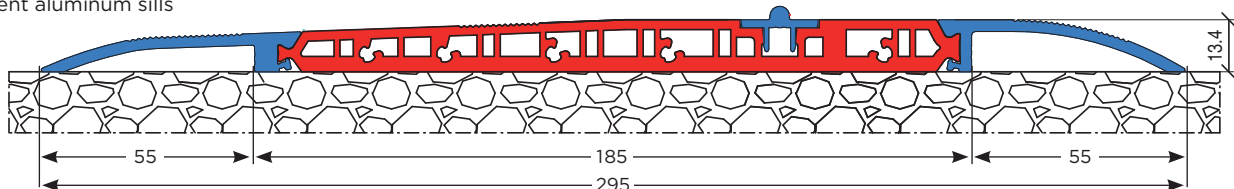
With straight aluminum sills



Mounted on the rough floor. Sills cover the floor covering on both sides.
Seal under flat threshold against pressurized water.

TYPE HST 20/1

With bent aluminum sills



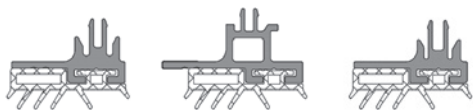
When installing on the continuous floor (tile, marble, etc.) the sills on both sides are already adapted to the floor covering.
Seal under flat threshold against pressurized water.

Note:

Due to various structural connection situations, occasionally condensation can form in the threshold area during extreme fluctuations in temperature. Passive house compatibility is not certified.

In general included in the scope of delivery:

- 1 Plastic roller shimming, 1 piece 230 mm / 1 piece 120 mm (system-dependent adapted).
- 2 Aluminum roller guides EV 1 anodized to clip-in.
- 3 Aluminum seal holder system-specific with EPDM seal adhered slip-proof.
- 4 Aluminum flat threshold EV 1 anodized with PVC center section, thermally insulated with UV resistant film cover.
- 5 EPDM sealing cushion as a set.
- 6 Plastic adapter for fixed part, light gray; width 70 mm.
- 7 Filler piece system-specific.
- 8 One pair threshold connectors incl. seal (system dependent). Factory made holes on threshold (ready for installation).
- 9 One pair front covers for flat threshold.



3 Overview of all seal holders on request



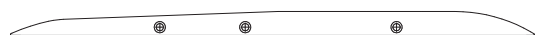
5



8



9 For HST 20, HST 20/2, HST 20/3

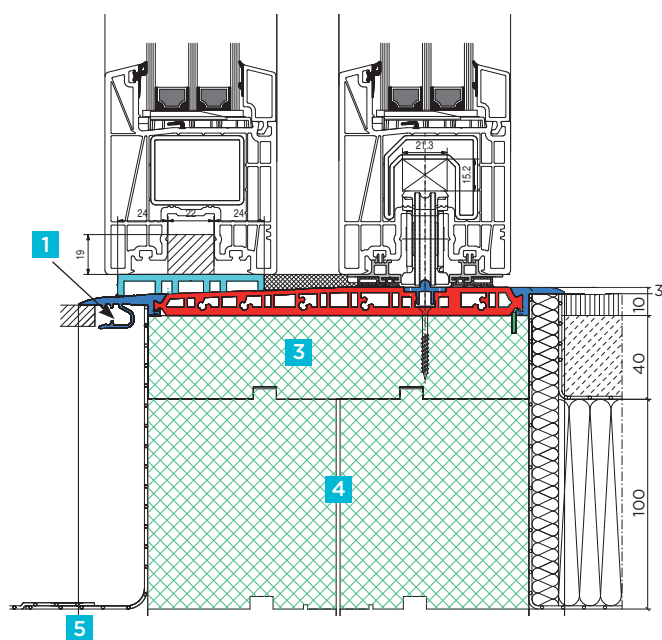
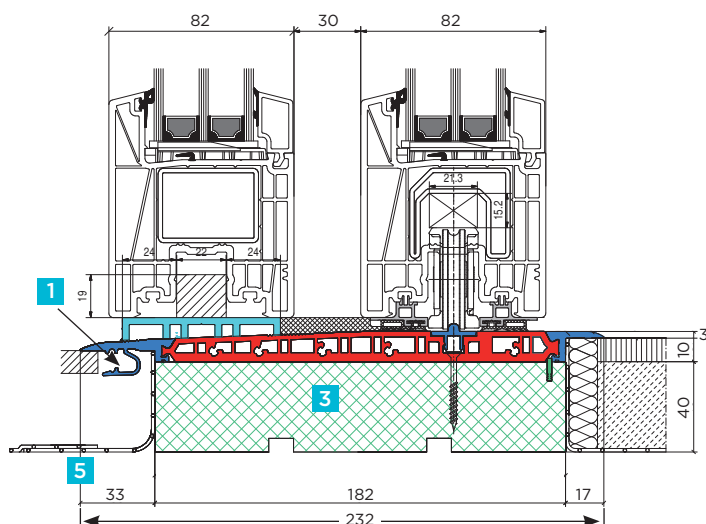


For HST 20/1

Lift-and-slide door flat threshold **with** floor recess, thermally insulated. Alu EV 1 anodized with PVC center section.

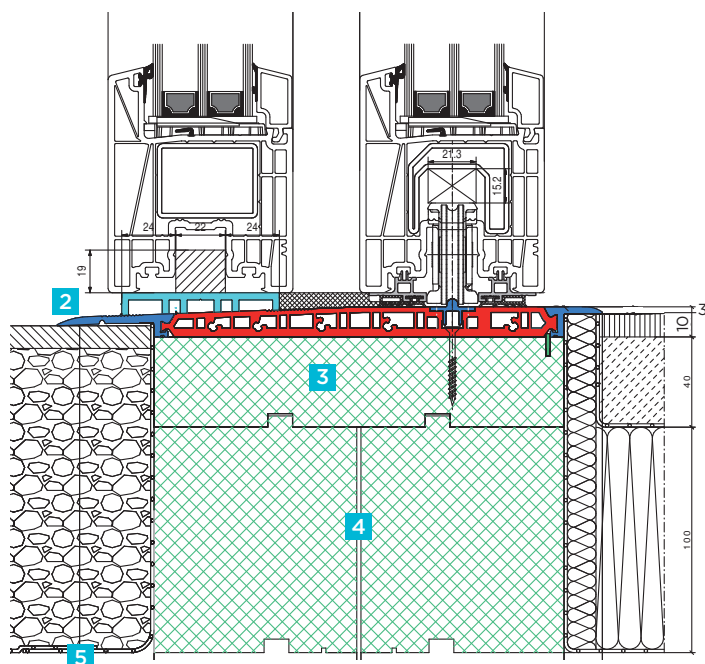
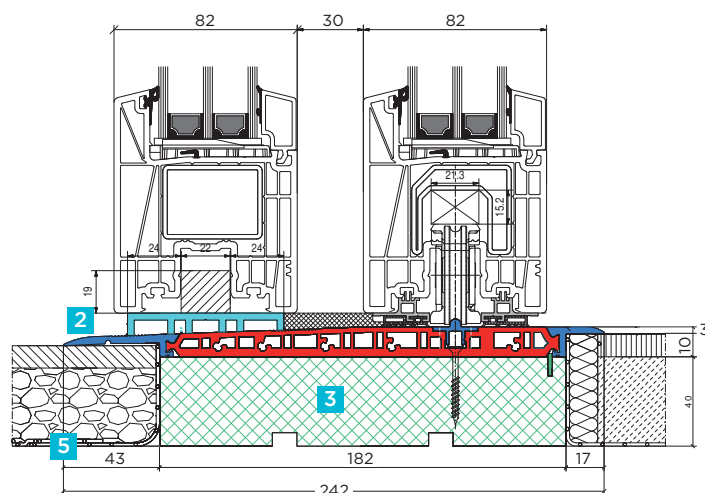
Calculation according to stock lengths: 2500 / 3000 / 3500 / 4000 / 4500 / 5000 / 5500 / 6000 mm
(Cut to length to fixed dimension with decorative frames, pre-drilled and ready for assembly on threshold.)

TYPE HST 20/2



- 1** Standard design **with** exterior clipping function for auxiliary profiles.

TYPE HST 20/3



- 2** Design with straight sills **without** exterior function for auxiliary profiles.

- 3** HST base profile for threshold foundation 182 x 40 mm (material: PET).
- 4** Load-bearing thermal insulation, two-part, for inserting on the HST base profile (plug-in connection 30, 40, 60 and 100 mm)*.
- 5** Patio seal with Wolfin sealing membrane (550 mm wide), preassembled at the factory on HST base profile, incl. 1 pair corner posts and 1 pair corner shaped parts*.

*Pos 4 + 5 available for additional charge.

CALCULATION OF THE ENTIRE FLOOR STRUCTURE:

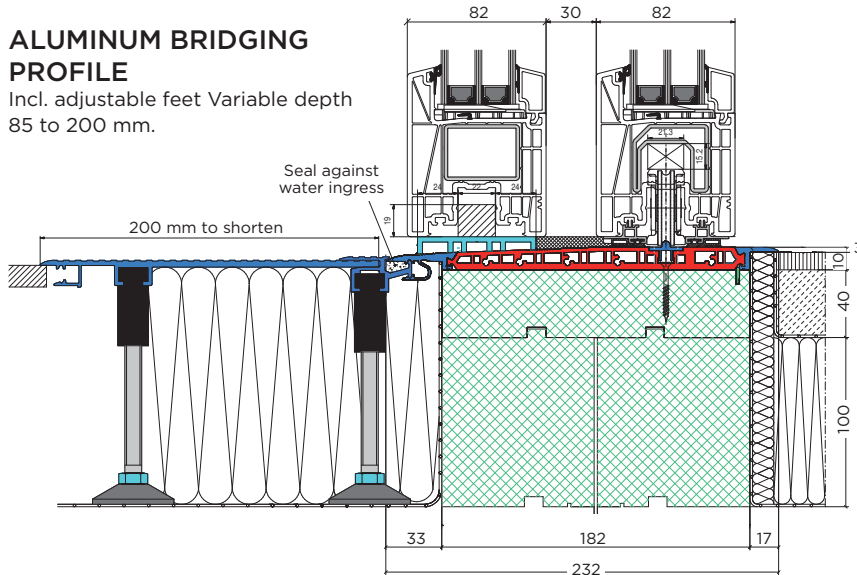
- HST flat threshold 10 mm floor recess
- + Base profile 40 mm
- + Variable thermal insulation for threshold foundation
- + Approx. 10 mm setting space

AUXILIARY PROFILES FOR HST 20/2

Can be clipped in exterior of flat threshold for fixed connection

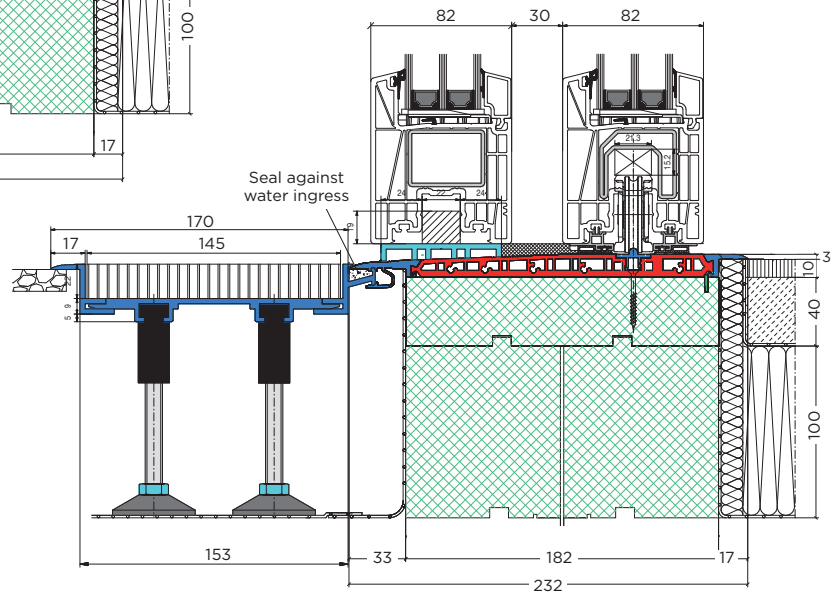
ALUMINUM BRIDGING PROFILE

Incl. adjustable feet Variable depth 85 to 200 mm.



ALU CHANNEL FRAMES

Incl. system grates; available in installation depth 120 or 170 mm.



RIPS ANTHRACITE DOORMAT

Incl. clip-in aluminum frame and adjustable feet. Standard 600 x 400 mm. Custom lengths in increments of 600 mm available on request.

