



## HST 10 lift-and-slide door flat threshold

- Suitable for new construction and renovations
- For all wooden or wood/aluminum lift-and-slide doors ('winter gardens', patios, balconies)
- With PVC center section as optimum thermal isolation
- **NEW:** with load-bearing thermal insulation for threshold foundation

### HST 10

New construction and renovation profile for lift-and-slide door systems (prefixed drainage channels are recommended)

Stock lengths 2500 to 6000 mm

Prefabricated delivery

Maximum user friendliness without wear or mechanics

Designed according to principles of universal design

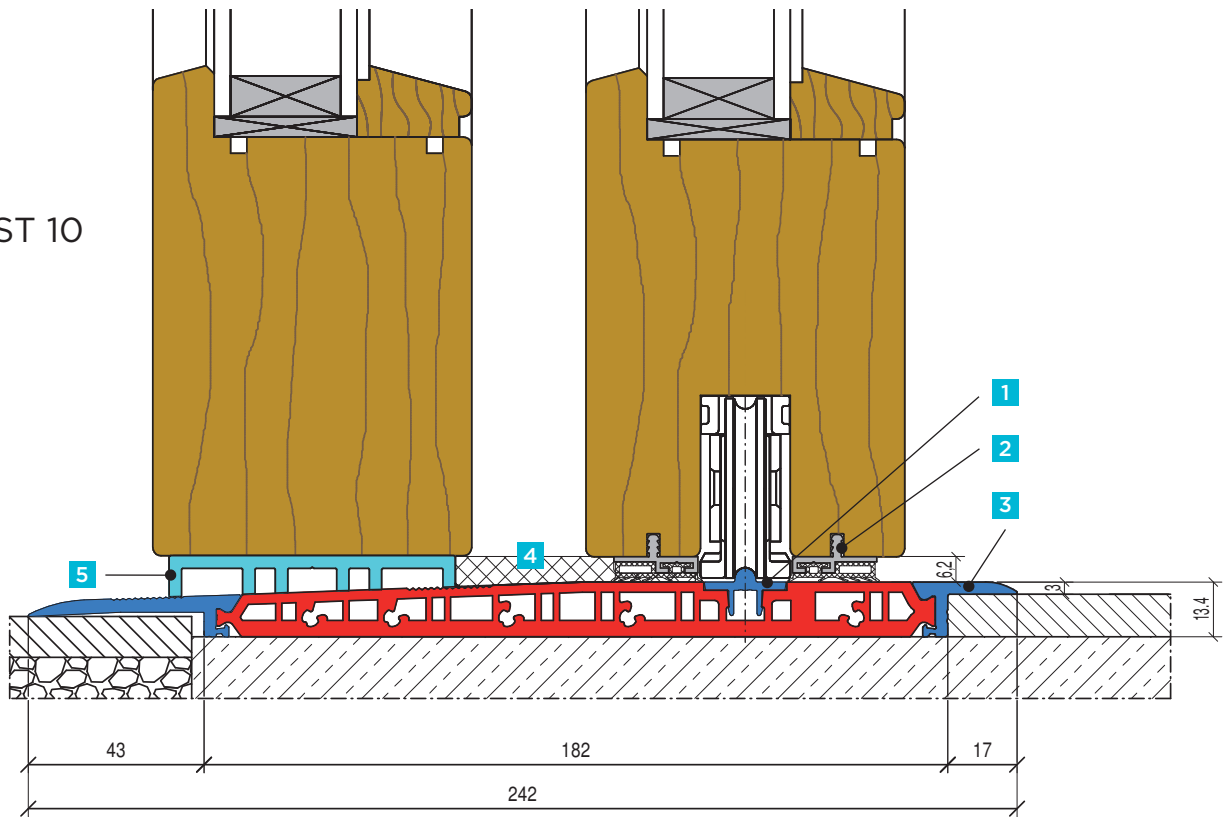
Version March 2018 · subject to technical changes

Lift-and-slide door flat threshold  
**without** floor recess, thermally insulated.  
 Alu EV 1 anodized with PVC center section.

Calculation according to stock lengths:  
 2,500 / 3,000 / 3,500 / 4,000 / 4,500 / 5,000 /  
 5,500 / 6,000 mm (cut to length to fixed dimension)

## TYPE HST 10

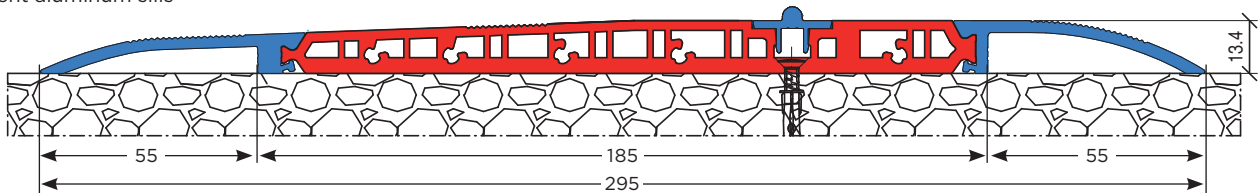
With straight aluminum sills



Mounted on the rough floor. Sills cover the floor covering on both sides.  
 Seal under flat threshold against pressurized water.

## TYPE HST 10/1

With bent aluminum sills

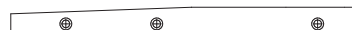
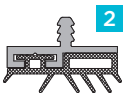


When installing on the continuous floor (tile, marble, etc.) the sills on both sides are already adapted to the floor covering. Seal under flat threshold against pressurized water.

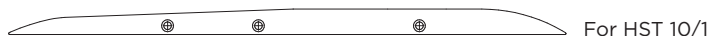
Note:  
 Due to various structural connection situations, occasionally condensation can form in the threshold area during extreme fluctuations in temperature.  
 Driving rain seal and passive house compatibility are not certified.

### In general included in the scope of delivery:

- 1 Aluminum roller guides EV 1 anodized to clip-in.
- 2 Aluminum seal holder with EPDM seal adhered slip-proof.
- 3 Aluminum flat threshold EV 1 anodized with PVC center section, thermally insulated with UV resistant film cover.
- 4 EPDM sealing cushion as a set.
- 5 Plastic adapter for fixed part, light gray; width 70 mm.
- 6 One pair plastic threshold connectors incl. seal (system dependent).
- 7 One pair front covers for flat threshold.



7 For HST 10, HST 10/2, HST 10/3

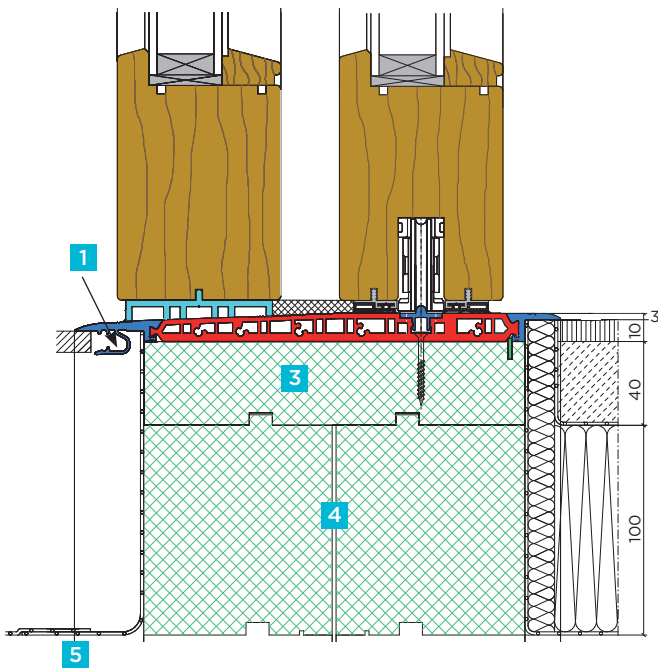
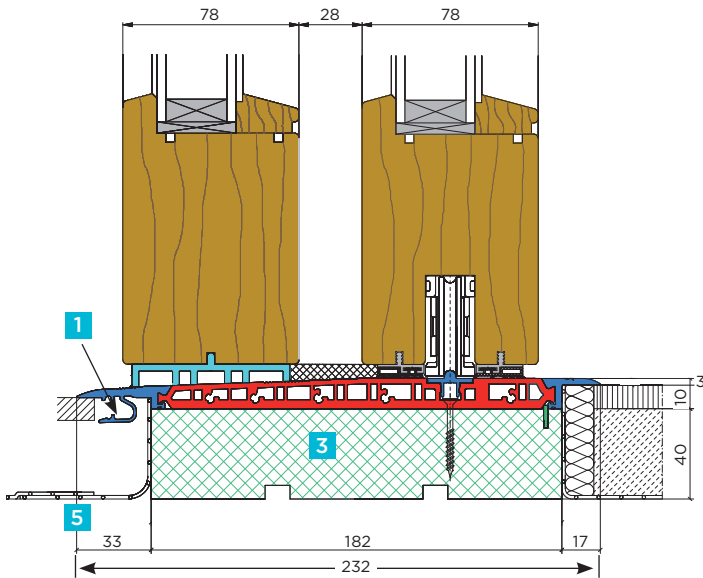


For HST 10/1

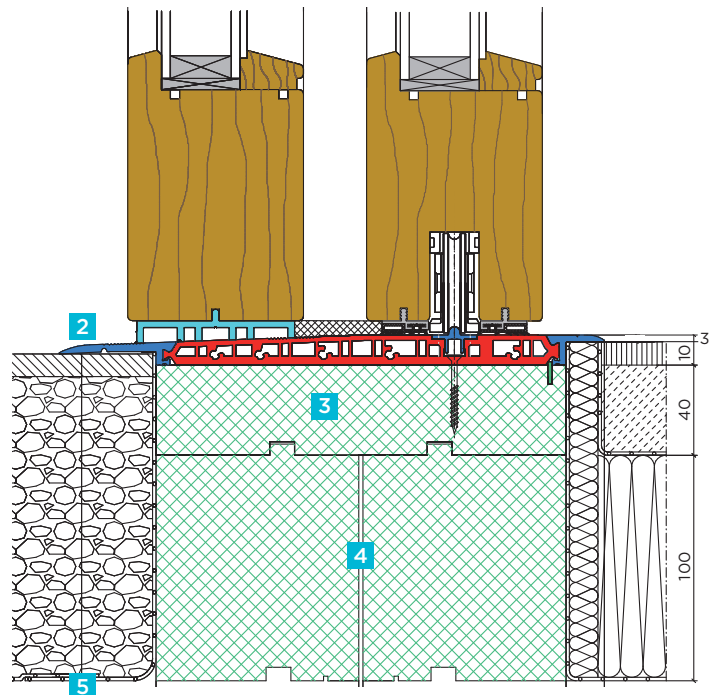
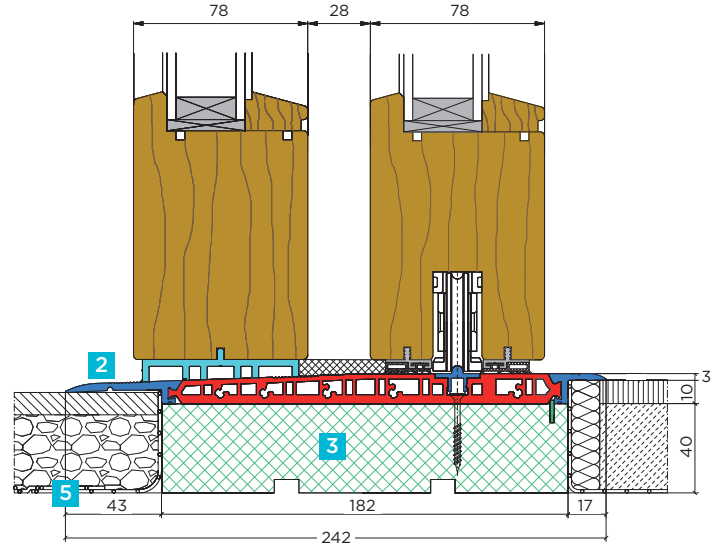
Lift-and-slide door flat threshold  
**with** floor recess, thermally insulated.  
 Alu EV 1 anodized with PVC center section.

Calculation according to stock lengths:  
 2,500 / 3,000 / 3,500 / 4,000 / 4,500 / 5,000 /  
 5,500 / 6,000 mm (cut to length to fixed dimension)

## TYPE HST 10/2



## TYPE HST 10/3



**1** Standard design **with** exterior clipping function for auxiliary profiles.

**2** Design with straight sills **without** exterior function for auxiliary profiles.

**3** HST base profile for threshold foundation 182 x 40 mm (material: PET).

**4** Load-bearing thermal insulation, two-part, for inserting on the HST base profile (plug-in connection 30, 40, 60 and 100 mm)\*.

**5** Patio seal with Wolfin sealing membrane (550 mm wide), preassembled at the factory on HST base profile, incl. 1 pair corner posts and 1 pair corner shaped parts\*.

\*Pos 4 + 5 available for additional charge.

**CALCULATION OF THE ENTIRE FLOOR STRUCTURE:**

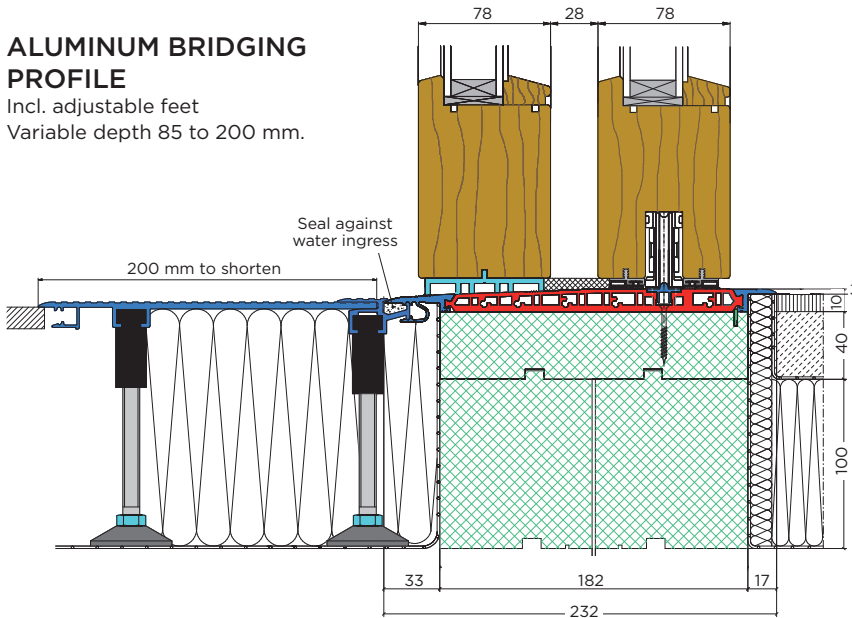
- HST flat threshold 10 mm floor recess
- + Base profile 40 mm
- + Variable thermal insulation for threshold foundation
- + Approx. 10 mm setting space

**AUXILIARY PROFILES FOR HST 10/2**

Can be clipped in exterior of flat threshold for fixed connection

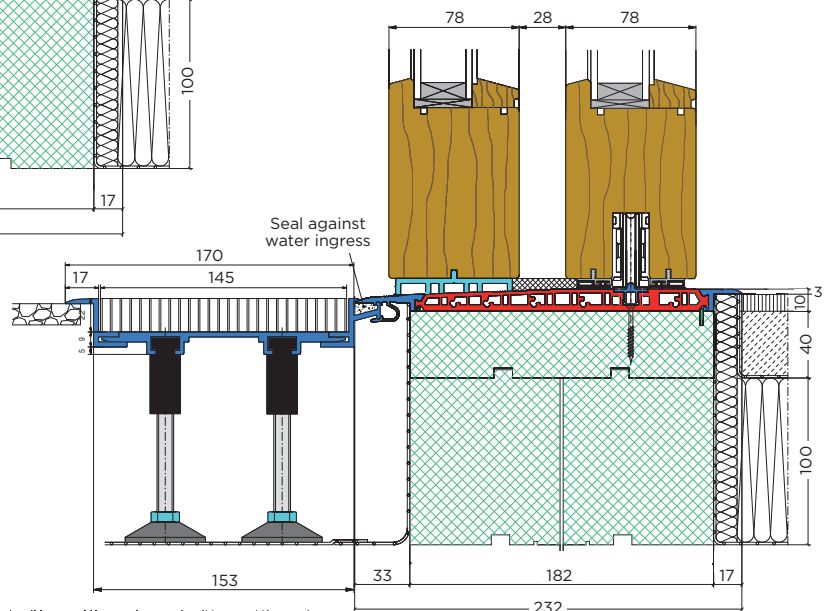
**ALUMINUM BRIDGING PROFILE**

Incl. adjustable feet  
 Variable depth 85 to 200 mm.



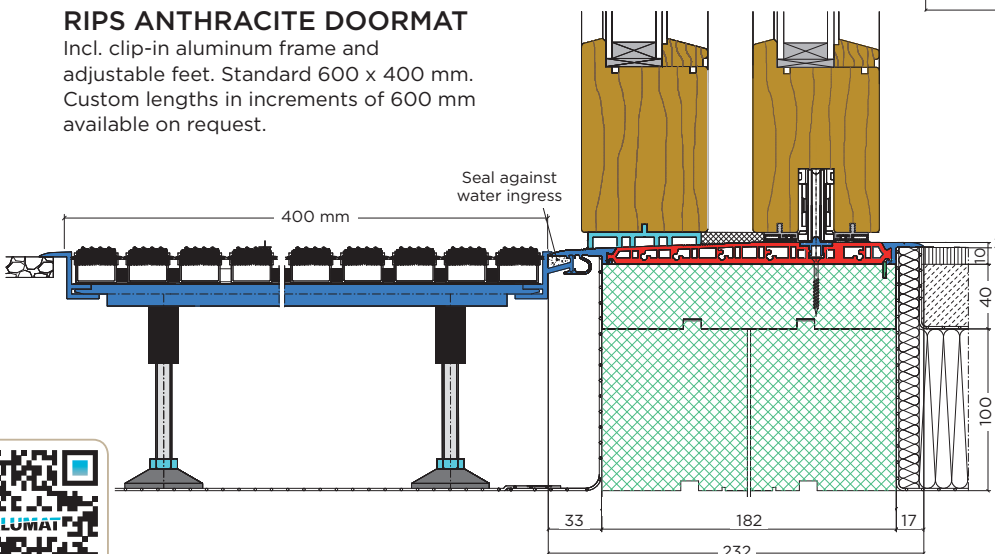
**ALU CHANNEL FRAMES**

Incl. system grates; available in installation depth 120 or 170 mm.



**RIPS ANTHRACITE DOORMAT**

Incl. clip-in aluminum frame and adjustable feet. Standard 600 x 400 mm. Custom lengths in increments of 600 mm available on request.



DD\_03.2018

