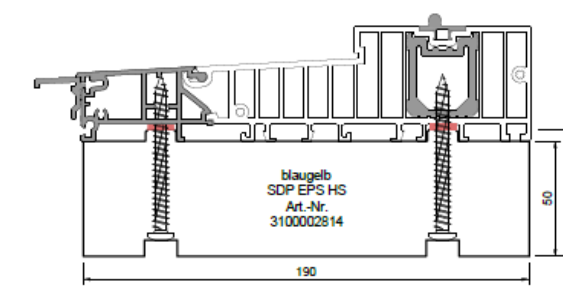
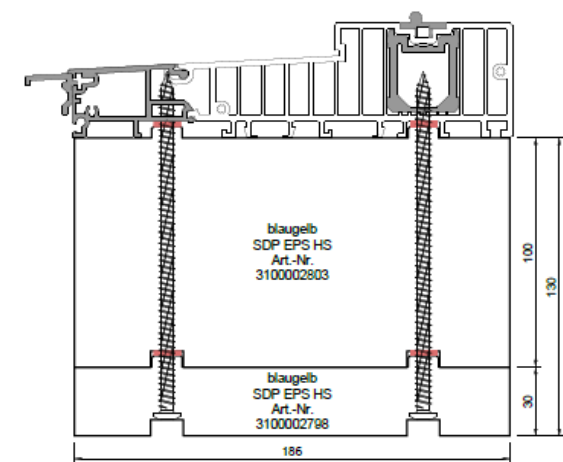


Siegenia HS slenkščio tipas Siegenia HS doorstep type	Kokiai sistemai tinka Profile system	Siegenia HS slenkščio plotis The width of Siegenia HS doorstep (mm)	BAP-EPS termoprofilio plotis The width of termoprofile BAP-EPS (mm)	BAP-EPS termoprofilio netto aukštis The height of termoprofile BAP-EPS (mm)	BAP-EPS termoprofilio artikulas ir brėžinio pavyzdys* EN: The article and sample drawing* of termoprofile BAP-EPS
ECO-PASS-B171-A-NUT	Holz IV68	171	167	30	GB-3100002770*
ECO-PASS-B171-A-NUT				40	GB-3100002771
ECO-PASS-B171-A-NUT				50	GB-3100002772
ECO-PASS-B171-A-NUT				60	GB-3100002773
ECO-PASS-B171-A-NUT				80	GB-3100002774
ECO-PASS-B171-A-NUT				100	GB-3100002775*
ECO-PASS-B171-A-NUT				120	GB-3100002776
ECO-PASS-B175	Deceuninck	175	171	30	GB-3100002777
ECO-PASS-B175				40	GB-3100002778
ECO-PASS-B175				50	GB-3100002779
ECO-PASS-B175				60	GB-3100002780
ECO-PASS-B175				80	GB-3100002781
ECO-PASS-B175				100	GB-3100002782*
ECO-PASS-B175				120	GB-3100002783
ECO-PASS-B179	Profine Premidoor 76	179	175	30	GB-3100002784*
ECO-PASS-B179				40	GB-3100002785
ECO-PASS-B179				50	GB-3100002786
ECO-PASS-B179				60	GB-3100002787
ECO-PASS-B179				80	GB-3100002788
ECO-PASS-B179				100	GB-3100002789
ECO-PASS-B179				120	GB-3100002790
ECO-PASS-B182-A-NUT	Holz IV78	182	178	30	GB-3100002791
ECO-PASS-B182-A-NUT				40	GB-3100002792
ECO-PASS-B182-A-NUT				50	GB-3100002793
ECO-PASS-B182-A-NUT				60	GB-3100002794*
ECO-PASS-B182-A-NUT				80	GB-3100002795
ECO-PASS-B182-A-NUT				100	GB-3100002796
ECO-PASS-B182-A-NUT				120	GB-3100002797


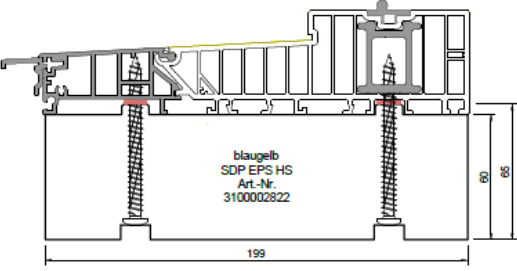
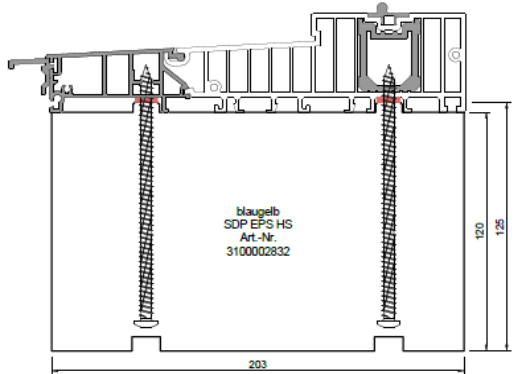
Termoprofilų ilgis 1200 mm. Jungimas per ilgį be atliekų (pleišto formos jungtis) ir jungimas per aukštį. The length of the thermoprofile is 1200 mm. Connection through the length without waste (tear-shaped connection) and connection through the height

Siegenia HS slenksčio tipas EN: Siegenia HS doorstep type	Kokiai sistemai tinka EN: Profile system	Siegenia HS slenksčio plotis mm EN: The width of Siegenia HS doorstep (mm)	BAP-EPS termoprofilio plotis mm EN: The width of thermoprofile BAP-EPS (mm)	BAP-EPS termoprofilio netto aukštis mm EN: The height of thermoprofile BAP-EPS (mm)	BAP-EPS termoprofilio artikelas ir brėžinio pavyzdys EN: The article and sample drawing of thermoprofile BAP-EPS
ECO-PASS-B190	190B Gealan 9000	190	186	30	GB-3100002798*
ECO-PASS-B190				40	GB-3100002799
ECO-PASS-B190				50	GB-3100002800
ECO-PASS-B190				60	GB-3100002801
ECO-PASS-B190				80	GB-3100002802
ECO-PASS-B190				100	GB-3100002803*
ECO-PASS-B190				120	GB-3100002804
ECO-PASS-R190	190R Rehau Synego	190	186	30	GB-3100002805
ECO-PASS-R190				40	GB-3100002806
ECO-PASS-R190				50	GB-3100002807
ECO-PASS-R190				60	GB-3100002808
ECO-PASS-R190				80	GB-3100002809
ECO-PASS-R190				100	GB-3100002810
ECO-PASS-R190				120	GB-3100002811
ECO-PASS-B194	Schuco Living Slide Veka Slide 82 Veka Motion Salamander eD	194	190	30	GB-3100002812
ECO-PASS-B194				40	GB-3100002813
ECO-PASS-B194				50	GB-3100002814*
ECO-PASS-B194				60	GB-3100002815
ECO-PASS-B194				80	GB-3100002816
ECO-PASS-B194				100	GB-3100002817
ECO-PASS-B194				120	GB-3100002818



Termoprofilų ilgis 1200 mm. Jungimas per ilgį be atliekų (pleišto formos jungtis) ir jungimas per aukštį.

The length of the thermoprofile is 1200 mm. Connection through the length without waste (tear-shaped connection) and connection through the height

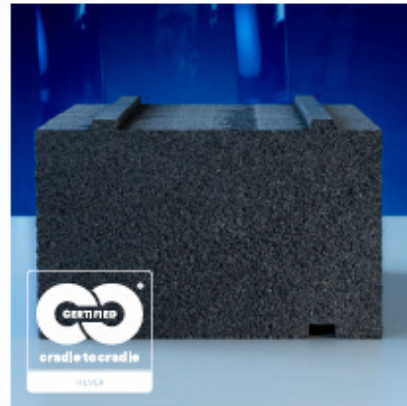
Siegenia HS slenksčio tipas EN: Siegenia HS doorstep type	Kokiai sistemai tinka EN: Profile system	Siegenia HS slenksčio plotis mm EN: The width of Siegenia HS doorstep (mm)	BAP-EPS termoprofilio plotis mm EN: The width of termoprofile BAP-EPS (mm)	BAP-EPS termoprofilio netto aukštis mm EN: The height of termoprofile BAP-EPS (mm)	BAP-EPS termoprofilio artikelis ir brėžinio pavyzdys EN: The article and sample drawing of termoprofile BAP-EPS	
ECO-PASS-B203-A-NUT	Holz IV92	203	199	30	GB-3100002819	
ECO-PASS-B203-A-NUT	Rehau Geneo			40	GB-3100002820	
ECO-PASS-B203-A-NUT				50	GB-3100002821	
ECO-PASS-B203-A-NUT				60	GB-3100002822 *	
ECO-PASS-B203-A-NUT				80	GB-3100002823	
ECO-PASS-B203-A-NUT				100	GB-3100002824	
ECO-PASS-B203-A-NUT				120	GB-3100002825	
ECO-PASS-B207	Profine Premidoor 88	207	203	30	GB-3100002826	
ECO-PASS-B207				40	GB-3100002827	
ECO-PASS-B207				50	GB-3100002828	
ECO-PASS-B207				60	GB-3100002829	
ECO-PASS-B207				80	GB-3100002830	
ECO-PASS-B207				100	GB-3100002831	
ECO-PASS-B207				120	GB-3100002832 *	

Termoprofilų ilgis 1200 mm. Jungimas per ilgį be atliekų (pleišto formos jungtis) ir jungimas per aukštį.

The length of the thermoprofile is 1200 mm. Connection through the length without waste (tear-shaped connection) and connection through the height



- **Tongue and groove connection for unlimited extension**
- **100 % recyclable, 100 % free of HCFCs, HFCs and HBCDs**
- **This product is Cradle to Cradle Certified® at the Silver level**
- **Enables sustainable construction thanks to reversibility of window sealing and fastening when renovating**
- **Low weight, high pressure resistance and high screw withdrawal values**
- **Does not produce fine dust harmful to the lungs when being processed (e.g. compared with mineral wool)**
- **Insensitive to moisture**



Technical data:

Material:	High-density EPS (expanded polystyrene), high ductility
Colour:	Grey
Compressive load bearing capacity at max. total deformation of 2 %:	1,260 kg/dm ²
Compressive load bearing capacity at 60 x 40 mm: (blaugelb Spacer Block)	5,800 N
Compressive load bearing capacity at 210 x 53 mm: (blaugelb Shim Block HST)	15,510 N
Fire behaviour: DIN 4102-1:1998-05 / DIN EN 13501-1:2019-05	B2 / Class E
Thermal conductivity nominal value λ_{10} : DIN EN 12667:2001-05	0.0403 W/m*K
Air permeability: EN 12207	Class 4
Water vapour diffusion resistance: DIN EN ISO 12086	228 μ
Airborne sound insulation: DIN EN ISO 717-1 (with an area of 0.8 m ²)	30 mm: R_w 28.0 dB \pm 1.2 dB 40 mm: R_w 28.5 dB \pm 1.2 dB 60 mm: R_w 31.9 dB \pm 1.2 dB 80 mm: R_w 33.9 dB \pm 1.2 dB
Bending strength: DIN EN 12089	\geq 2,490 kPa
Compression stress (2 % compression): DIN EN DIN EN 13163:2017 / EN 826:2013-05	\geq 1,435 kPa
Shear strength: DIN EN ISO 14130	0.217 N/mm ²
Dimensional strength: DIN ISO 75-1	Short-term up to +95 °C Long-term up to +85 °C
Dimensional stability: DIN EN 13163:2015-04	Very high, including outdoor weathering
Water absorption after 28 days under water: DIN 12087	\leq 0.5 vol. %
Screw withdrawal values: blaugelb Frame Screw Fix FK-T30 7.5 x 42 mm sfs window sill screw 4.5 x 35 mm	$F_{FK,AZ}$ 1,200 N $F_{FK,AZ}$ 510 N
Compatibility with conventional building materials:	Compatible, except for solvents, solvent-bearing materials and materials that are not polystyrene-compatible
Ageing resistance:	Mould-proof, does not rot
Waste code:	Code no. 170604 Code no. 170904